



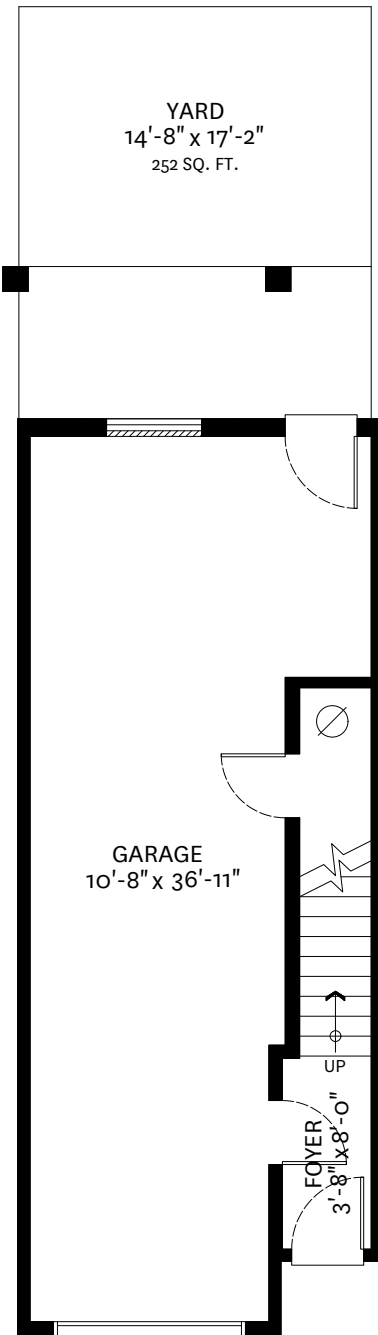
TIM HILL

& ASSOCIATES PERSONAL REAL ESTATE CORPORATION

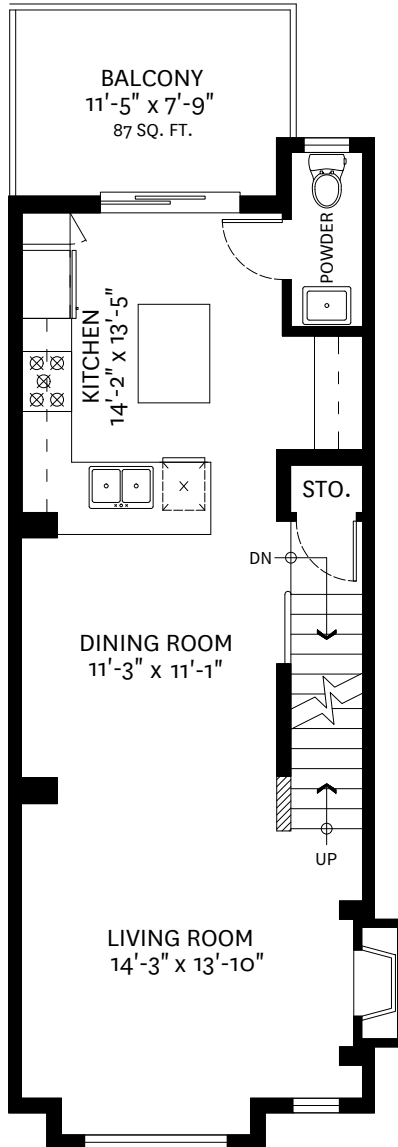
**#126-10151 240 Street,
Maple Ridge, BC**

Upper Floor: 661 SF
Main Floor: 606 SF
Lower Floor: 105 SF
Total: 1372 SF

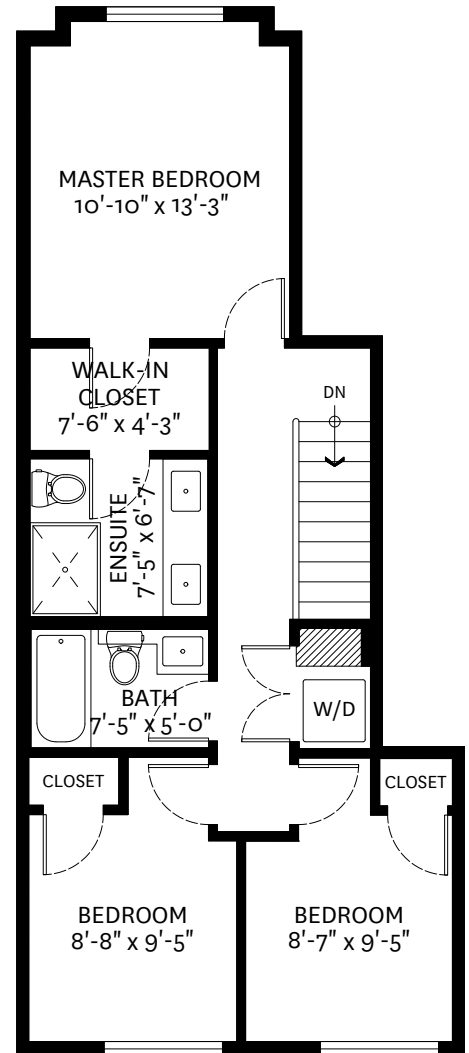
Balcony: 87 SF
Yard: 252 SF
Garage: 463 SF



LOWER FLOOR PLAN
Ceiling Height: 8'-0"



MAIN FLOOR PLAN
Ceiling Height: 8'-11"



UPPER FLOOR PLAN
Ceiling Height: 8'-0"



RE/MAX Advantage Realty
Each office is independently owned and operated.

C 604 319 4700 | F 604 526 0723 | E tim@timhillrealestate.com
#102 - 321 Sixth Street | New Westminster | BC | V3L 3A7

www.timhillrealestate.com

This floor plan illustration is for references only as it is not produced by a certified architect. Measurements are approximate and may not be to scale. To be used for marketing materials only; not for assessment and/or appraisal.

floor plan designed by
ishot.ca Enterprises Inc.
604-368-7979
<http://ishot.ca>