



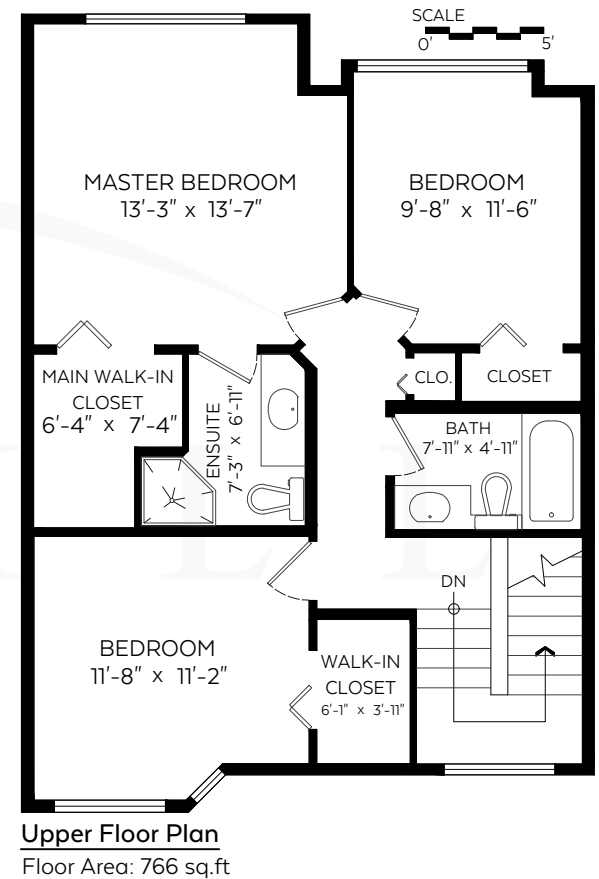
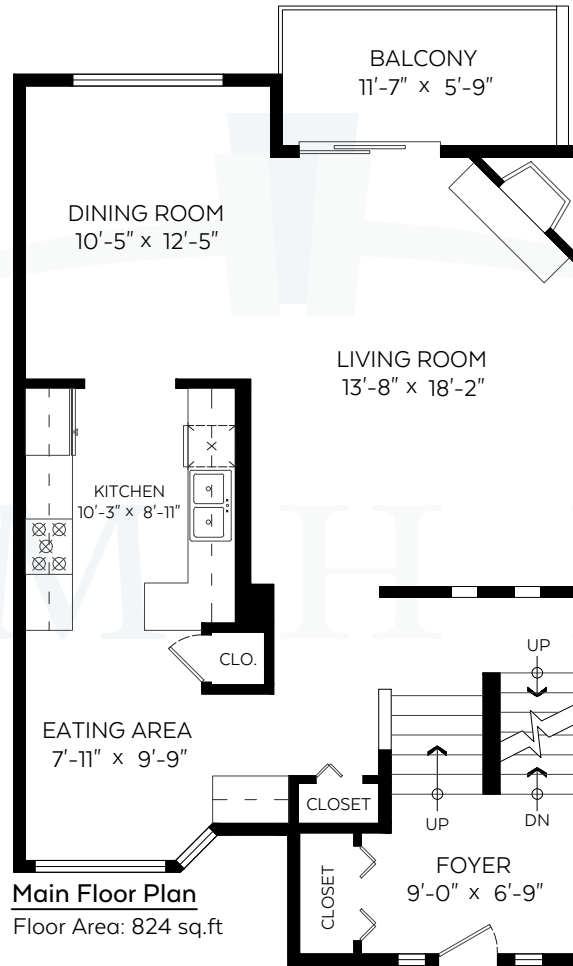
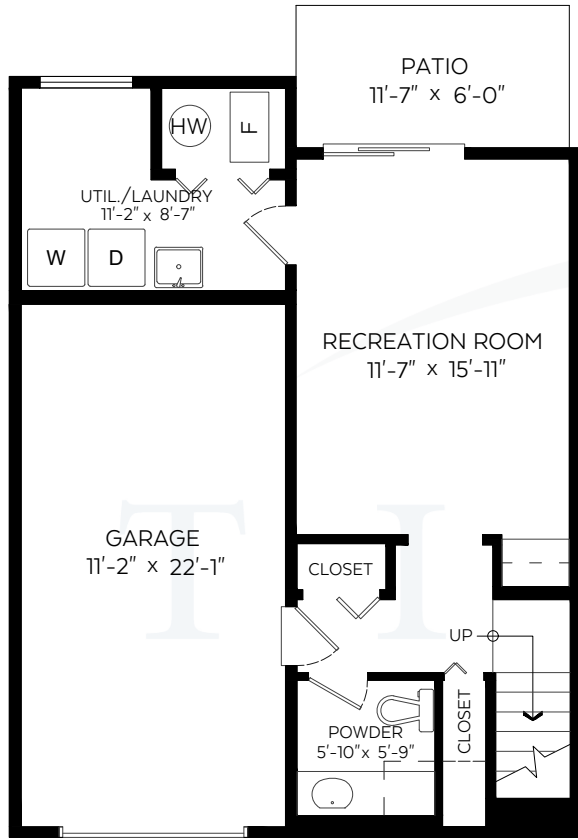
# TIM HILL

## #65-32339 7th Avenue, Mission, B.C.

Main Floor: 824 SF | Garage: 264 SF

Upper Floor: 766 SF | Patio: 70 SF

Lower Floor: 481 SF | Balcony: 72 SF



#102-321 Sixth Street | New Westminister BC V3L 3A7  
C 604 319 4700 | F 604 526 0723 | E timhillrealestate@outlook.com

Measured on: Sept. 6, 2017

tim-hill.ca | royalcityrealty.ca

