

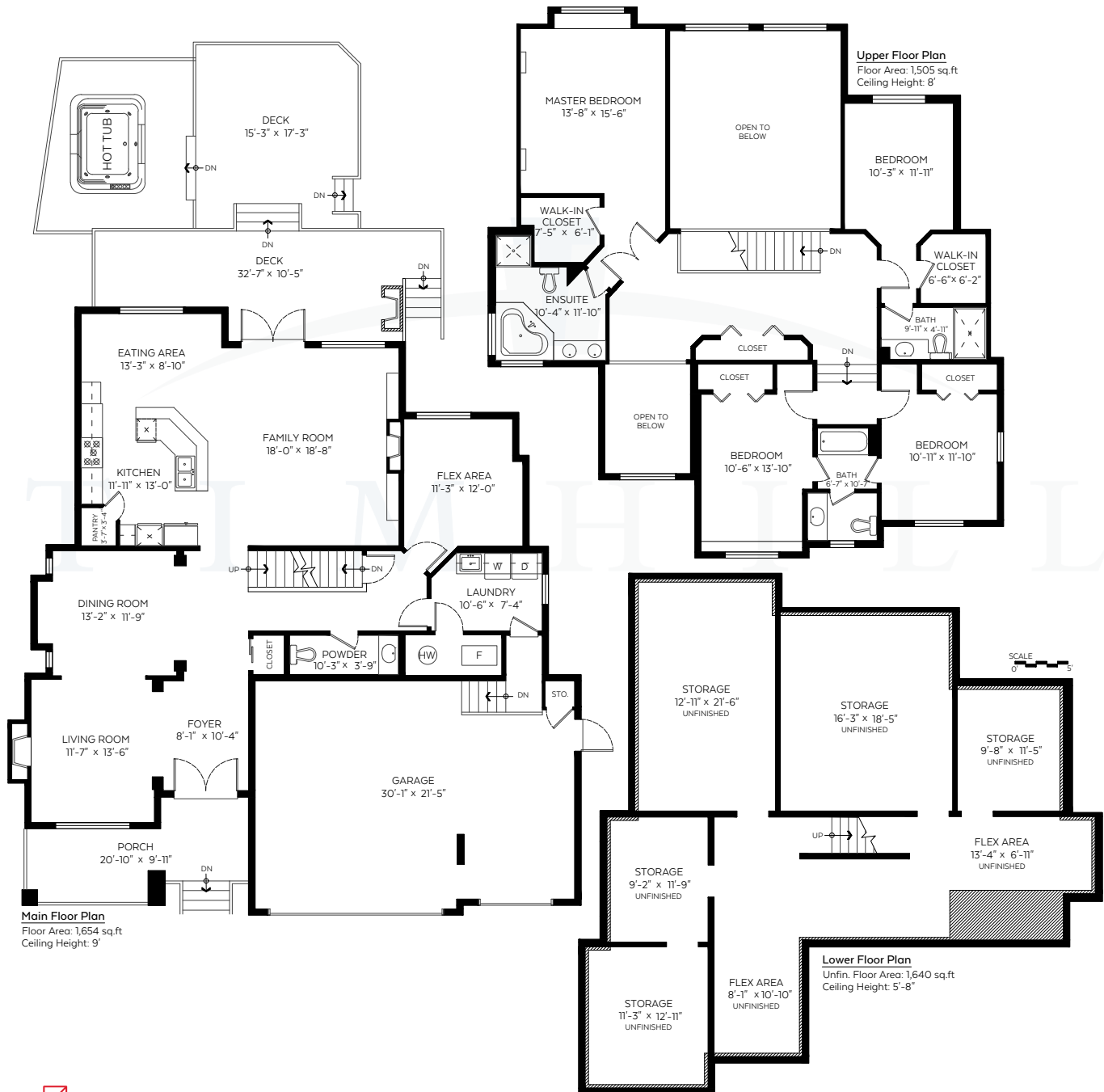


TIM HILL

12491 201 Street, Maple Ridge, B.C.

Main Floor: 1,654 SF
 Upper Floor: 1,505 SF
 Unfin. Lower Floor: 1,640 SF
 Total: 4,799 SF

Garage: 690 SF
 Porch: 160 SF
 Deck: 778 SF
 Open To Below: 408 SF



Measured on: August 13, 2017

#102-321 Sixth Street | New Westminister BC V3L 3A7

C 604 319 4700 | F 604 526 0723 | E timhillrealestate@outlook.com



tim-hill.ca | royalcityrealty.ca

