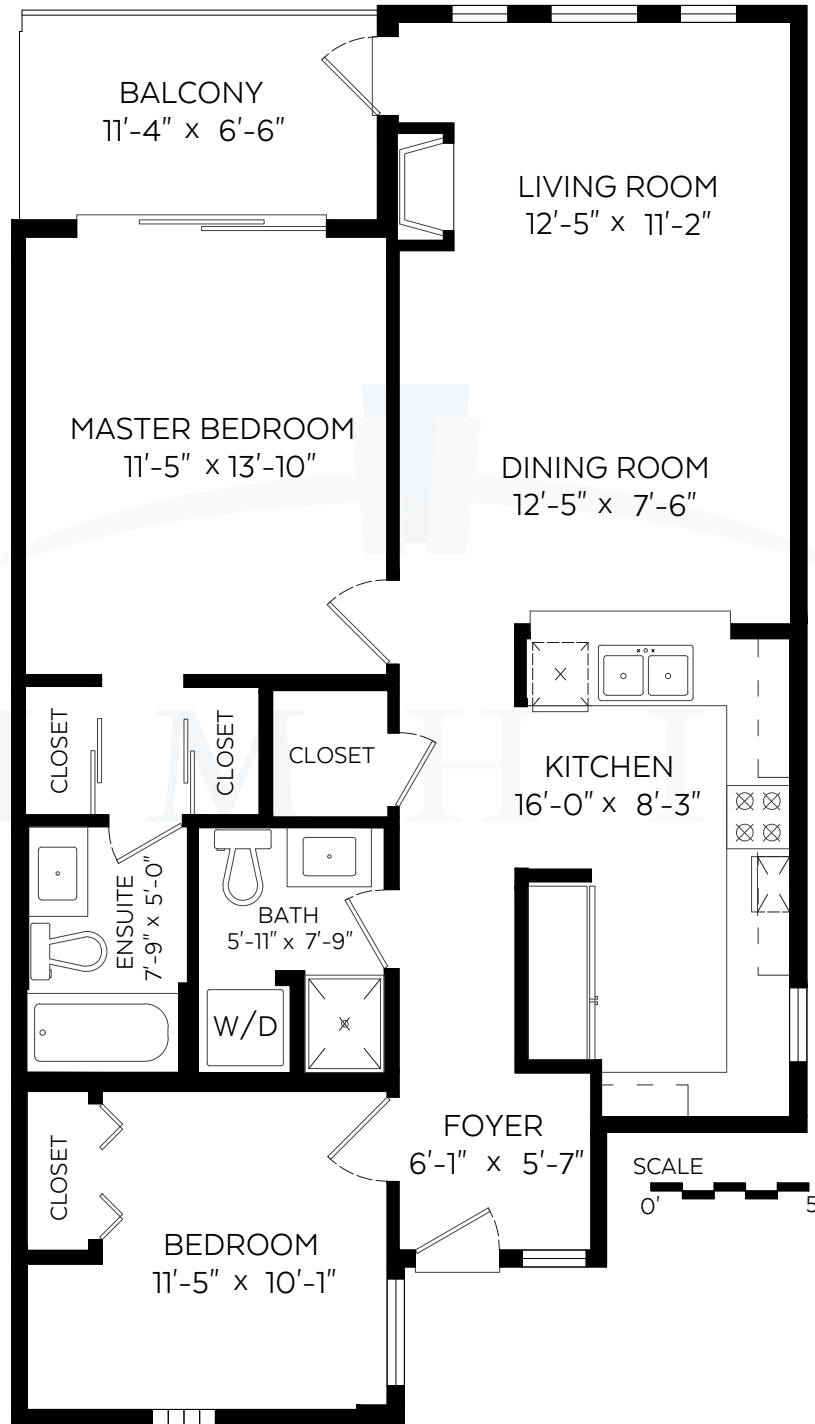




TIM HILL

#111-2 Renaissance Square

Main Floor: 964 SF | Balcony: 75 SF



Measured on: August 23, 2017

#102-321 Sixth Street | New Westminster BC V3L 3A7

C 604 319 4700 | F 604 526 0723 | E timhillrealestate@outlook.com



tim-hill.ca | royalcityrealty.ca



NORTH